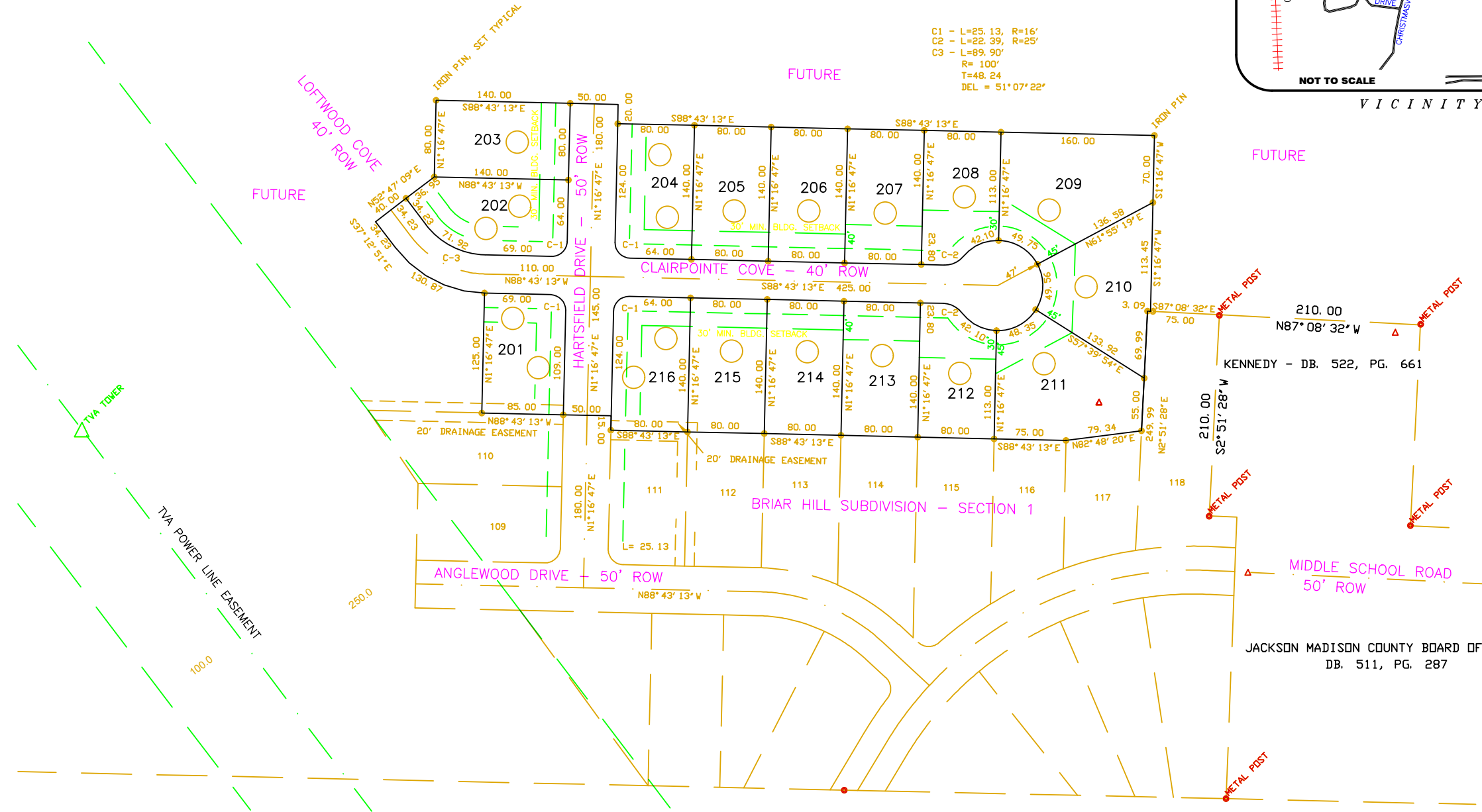


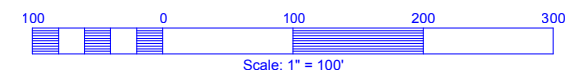
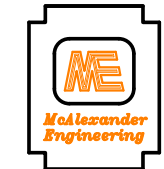
T.S.P.C.S.



CERTIFICATE OF OWNERSHIP AND DEDICATION

**FINAL PLAT**  
**BRIARHILL SUBDIVISION**  
**SECTION II**

JACKSON, MADISON COUNTY, TENNESSEE  
 TAX MAP NO. 42, PARCEL NO. 23.00 (PORTION)  
 ZONED: RS-1 (SINGLE FAMILY RESIDENTIAL)  
 SECTION II - 16 LOTS - 5.4220 ACRES



[jacksonlotsales.com](http://jacksonlotsales.com)