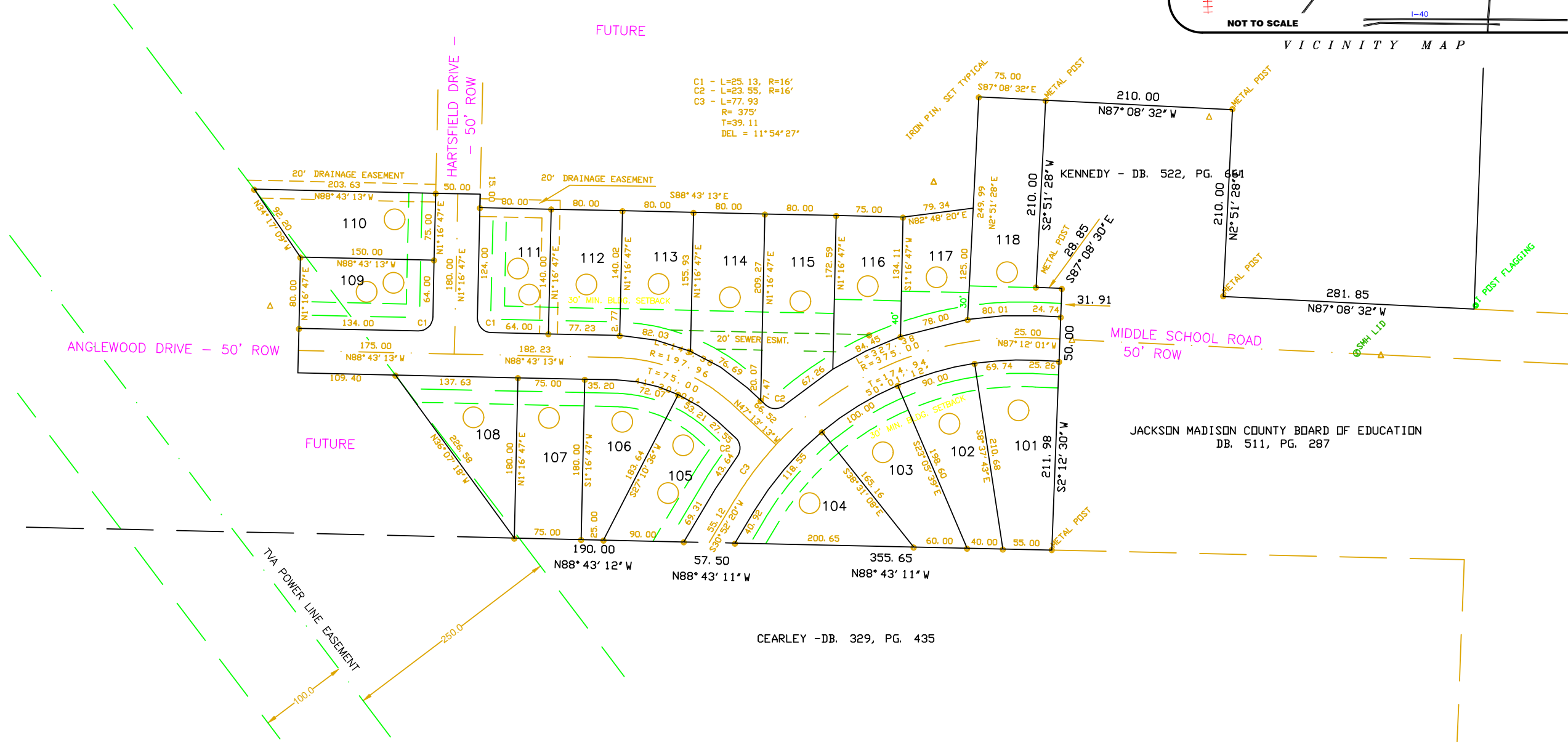
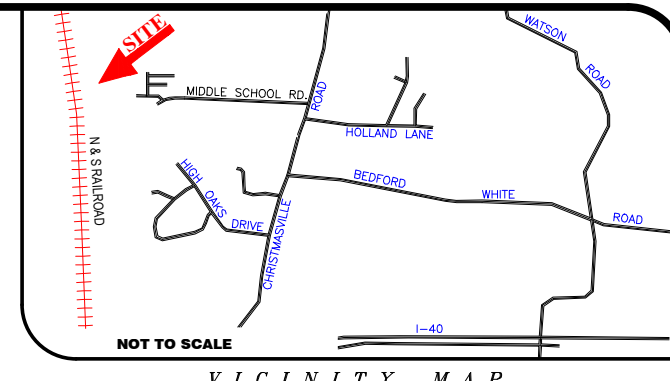


T.S.P.C.S.



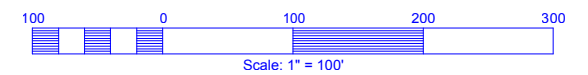
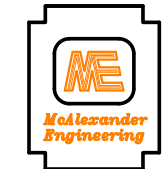
C1 - L=25.13, R=16'
C2 - L=23.55, R=16'
C3 - L=77.93
R=375'
T=39.11
DEL = 11°54'27'

JACKSON MADISON COUNTY BOARD OF EDUCATION
DB. 511, PG. 287

CEARLEY -DB. 329, PG. 435

FINAL PLAT BRIARHILL SUBDIVISION SECTION I

JACKSON, MADISON COUNTY, TENNESSEE
TAX MAP NO. 42, PARCEL NO. 23.00 (PORTION)
ZONED: RS-1 (SINGLE FAMILY RESIDENTIAL)
SECTION I - 18 LOTS - 6.8115 ACRES



jacksonlotsales.com